

MAX

ENGINEERED FOR
PERFORMANCE



RE·BAR·TIER
TWINTIER

Original since 1993, made in Japan

COMPANY & BRAND

WHO IS MAX

Since 1942, MAX has been recognized worldwide as a leading manufacturer of high-end industrial tools and office products. MAX product engineers concentrate on developing products with highly innovative and durable features to support the ever-evolving needs of the professionals that use them. The MAX Advantage begins with our R&D, engineering and production teams and ends with our customers. Based on end-user feedback, we continually re-engineer our products to meet real-world demands. Our close working relationships with our customers allow us to stay ahead of industry trends in growing markets.



Corporate Slogan

ENGINEERED FOR PERFORMANCE

Working to create new standards, we have developed a deep familiarity with the people who use our products. This encourages us to think boldly, as we aim to bring the world a unique style of convenience.

World's first Battery Operated Cordless Rebar Tying Tool

RE-BAR-TIER

In 1993 MAX developed the world's first battery operated rebar tying tool "RE-BAR-TIER" for the Japanese market and launched in 1995 for European market.

The most advanced Battery Operated Cordless Rebar Tying Tool

TYWINTIER

In 2017 MAX launched the 7th generation rebar tying tool, the RB441T TWINTIER. This was the first TWINTIER to enter the market.

OVER 30 YEARS EXPERIENCE

RE-BAR-TIER
RB260 - 1993
The World's first battery operated Rebar Tying Machine in Japan



RE-BAR-TIER
RB392 - 1998
Increased tying speed up to 1 sec/tie



RE-BAR-TIER
RB655 - 2006
Mounted DC brushless twisting motor



RE-BAR-TIER
RB398 - 2015
20th Anniversary of RE-BAR-TIER



TYWINTIER
RB611T - 2019
Large Jaw model



TYWINTIER
RB401T-E - 2020
Stand-Up model



RE-BAR-TIER
RB262 - 1995
Launched into Europe



RE-BAR-TIER
RB395 - 2004
Improved durability



RE-BAR-TIER
RB397 - 2009
Mounted Li-ion battery



TYWINTIER
RB441T - 2017
7th generation model launched in Europe that incorporated evolutionary TWINTIER mechanism



RE-BAR-TIER
RB398S - 2019
Advanced RB398



TYWINTIER
RB443T - 2024
Faster tying model at 0.5 sec /tie



BENEFIT



Faster



Easy Operation



Increase productivity



Reduce health risk



No Experience Required

TWINTIER MECHANISM



KEY FEATURES

FASTER TIE SPEED

TWINTIER

TWIN WIRE SYSTEM

Incorporates MAX Twin-Wire System which wraps two wires simultaneously, making a single tie in 0.5 to 0.7 seconds. Single-Wire System wraps one wire three times, making each tie at 0.9 seconds.

SINGLE WIRE SYSTEM

+100% MORE TIE CAPACITY - COIL

TWIN WIRE SYSTEM

Approx. 240 ties

TW1061 Wire

SINGLE WIRE SYSTEM

Approx. 120 ties

TW898 Wire

TWINTIER can make approx. 240 ties per one coil of wire. REBARTIER can make approx. 120 ties per one coil of wire.

+1000 TIES MORE CAPACITY - CHARGE

D13 x D13 Rebar combination

TWIN WIRE SYSTEM

Approx. 5.000 ties

SINGLE WIRE SYSTEM

Approx. 4.000 ties

Both TWINTIER and REBARTIER use the same battery, but TWINTIER can tie 5000 times on a full charge, while REBARTIER can tie 4000 times (1000 less ties).

+50% TIGHTNESS

Tying Strength (N)

TWIN WIRE SYSTEM

SINGLE WIRE SYSTEM

SHORTER TIE HEIGHT BY 50%

24 mm

12 mm

TAIL

NO TAIL

NUMBER OF TIE/COIL

| | RB398S | RB443T | RB611T | RB401T-E |
|-------------|--------|--------|--------|----------|
| D10+D10 | 120 | 265 | - | 260 |
| D13+D13 | 120 | 240 | - | 235 |
| D16+D16 | 120 | 215 | 205 | 210 |
| D20+D20 | - | 180 | 180 | 175 |
| D22+D22 | - | 170 | 170 | - |
| D25+D25 | - | - | 155 | - |
| D38+D16 | - | - | 150 | - |
| D38+D16+D16 | - | - | 140 | - |

RB443T - FASTER TYING MODEL -



FEATURES

| | | | |
|--|--------------------------|--|-----------------------|
| | Wire Feeding Support | | 0.5sec/tie |
| | Easy Wire Loading Button | | Short Trigger Stroke |
| | Torque Dial | | Maximum 265 ties/coil |
| | Durable | | Equipped Belt Hook |

KEY FEATURE. 1

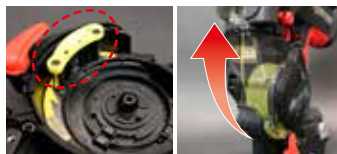
Faster Tying Speed



0.5 sec/tie

MECHANISM

Improved tying operation and increased wire feed speed with new "WIRE FEED SUPPORT" part, which allows even faster tying than the previous RB441T.



KEY FEATURE. 2

Two Ways Loading Wire



1. WIRE LOADING ASSISTANCE



2. MANUAL WIRE LOADING

The WIRE LOADING ASSISTANCE feature added to the RB443T makes wire replacement easier. You can also still use the same manual replacement method as the previous RB441T.

APPLICABLE REBAR COMBINATION

| | | |
|--|--|--|
| Mesh Rebar MINIMUM $\Phi 2.6 \times \Phi 2.6$ MAXIMUM $\Phi 8 \times \Phi 8$ | 4 Bars MINIMUM $D10 \times D10 \times D10 \times D10$ MAXIMUM $D16 \times D16 \times D13 \times D13$ | 2 Bars MINIMUM $D10 \times D10$ MAXIMUM $D22 \times D22$ |
|--|--|--|



Extension Bar Optional



Lift-up Nose Optional

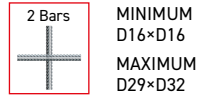
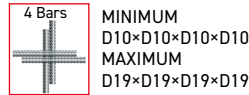
SPECIFICATIONS

| | |
|-------------------------------|---|
| MODEL: | RB443T |
| WEIGHT: | 2.5 Kg Battery included |
| DIMENSIONS: | H295 × W120 × L330 mm |
| TYING SPEED: | 0.5 sec/tie |
| WRAPS PER TIE: | 2 wraps |
| TIES PER COIL: | Approx. 170 to 265 ties |
| TIES PER CHARGE: | Approx. 5,000 ties |
| BATTERY: | JPL91450A 5.0 Ah Li-ion 14.4 V |
| CHARGER: | JC925A |
| BATTERY RECHARGE TIME: | 80% capacity - 60min 100% capacity - 80min |
| APPLICABLE REBAR COMBINATION: | Mesh rebars: $\Phi 2.6 \times \Phi 2.6 - \Phi 8 \times \Phi 8$ 2 rebars: $D10 \times D10 - D22 \times D22$ |

RB611T - LARGE JAW MODEL-



Applicable Rebar Combination



Extension Bar Optional

Enables tying larger rebar and conduit



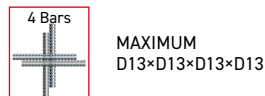
SPECIFICATIONS

| | |
|-------------------------------|--|
| MODEL: | RB611T |
| WEIGHT: | 2.5 Kg Battery included |
| DIMENSIONS: | H300 × W120 × L350 mm |
| TYING SPEED: | 0.7 sec/tie |
| WRAPS PER TIE: | 2 wraps |
| TIES PER COIL: | Approx. 140 to 205 ties |
| TIES PER CHARGE: | Approx. 5,000 ties |
| BATTERY: | JPL91450A 5.0 Ah Li-ion 14.4 V |
| CHARGER: | JC925A |
| BATTERY RECHARGE TIME: | 80% capacity - 60min 100% capacity - 80min |
| APPLICABLE REBAR COMBINATION: | 2 rebars: D16×D16 - D29×D32 4 rebars: D19×D19×D19×D19 |

RB401T-E - STAND-UP MODEL-



Applicable Rebar Combination



Short Nose Attachment Optional

Tying without bending down reduce strain on the lower back.



SPECIFICATIONS

| | |
|-------------------------------|--|
| MODEL: | RB401T-E |
| WEIGHT: | 4.6 Kg Battery included |
| DIMENSIONS: | H322 × W408 × L1,100 mm |
| TYING SPEED: | 0.7 sec/tie |
| WRAPS PER TIE: | 2 wraps |
| TIES PER COIL: | Approx. 180 to 260 ties |
| TIES PER CHARGE: | Approx. 4,600 ties |
| BATTERY: | JPL91450A 5.0 Ah Li-ion 14.4 V |
| CHARGER: | JC925A |
| BATTERY RECHARGE TIME: | 80% capacity - 60min 100% capacity - 80min |
| APPLICABLE REBAR COMBINATION: | 2 rebars: D10×D10 - D20×D20 4 rebars: D13×D13×D13×D13 |

TW1061T SERIES TWIN WIRE



Tiewire for TYINTIER

Patented. EP3326949 / EP3632828 / EP3666702 / RU2675942



30 coils / box



TW1061T
Regular Steel



TW1061-EG
Electro Galvanize



TW1061-PC
Polyester-Coated

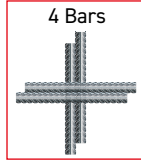


TW1061-S
Stainless Steel

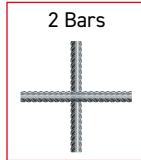
RB398S - SINGLE WIRE REGULAR MODEL -



Applicable Rebar Combination



MINIMUM
D10×D10×D10×D10
MAXIMUM
D13×D13×D13×D13



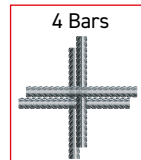
MINIMUM
D10×D10
MAXIMUM
D16×D19

| SPECIFICATIONS | |
|-------------------------------|--|
| MODEL: | RB398S |
| WEIGHT: | 2.4 Kg Battery included |
| DIMENSIONS: | H305 × W105 × L290 mm |
| TYING SPEED: | 0.9 sec/tie |
| WRAPS PER TIE: | 3 wraps |
| TIES PER COIL: | Approx. 120 ties |
| TIES PER CHARGE: | Approx. 4,000 ties |
| BATTERY: | JPL91450A 5.0 Ah Li-ion 14.4 V |
| CHARGER: | JC925A |
| BATTERY RECHARGE TIME: | 80% capacity - 60min 100% capacity - 80min |
| APPLICABLE REBAR COMBINATION: | 2 rebars: D10×D10 - D16×D19 4 rebars: D13×D13×D13×D13 |

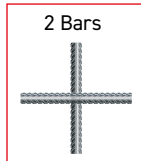
RB518 - SINGLE WIRE LARGE JAW MODEL -



Applicable Rebar Combination



MINIMUM
D10×D10×D10×D10
MAXIMUM
D13×D13×D16×D16



MINIMUM
D16×D16
MAXIMUM
D22×D25

| SPECIFICATIONS | |
|-------------------------------|--|
| MODEL: | RB518 |
| WEIGHT: | 2.4 Kg Battery included |
| DIMENSIONS: | H305 × W105 × L305 mm |
| TYING SPEED: | Approx. 1.0 sec/tie |
| WRAPS PER TIE: | 3 or 4 wraps |
| TIES PER COIL: | 3 wraps: Approx. 90 ties 4 wraps: Approx. 75 ties |
| TIES PER CHARGE: | 3 wraps: Approx. 3,200 ties 4 wraps: Approx. 2,900 ties |
| BATTERY: | JPL91450A 5.0 Ah Li-ion 14.4 V |
| CHARGER: | JC925A |
| BATTERY RECHARGE TIME: | 80% capacity - 60min 100% capacity - 80min |
| APPLICABLE REBAR COMBINATION: | 2 rebars: D16×D16 - D22×D25 4 rebars: D13×D13×D16×D16 |

RB218 - SINGLE WIRE SMALL JAW MODEL -



Applicable Rebar Combination



MAXIMUM
φ10×φ10

| SPECIFICATIONS | |
|-------------------------------|---|
| MODEL: | RB218 |
| WEIGHT: | 2.4 Kg Battery included |
| DIMENSIONS: | H305 × W105 × L270 mm |
| TYING SPEED: | Approx. 1.0 sec/tie |
| WRAPS PER TIE: | 3 wraps |
| TIES PER COIL: | Approx. 150 - 210 ties |
| TIES PER CHARGE: | Approx. 4,600 ties |
| BATTERY: | JPL91450A 5.0 Ah Li-ion 14.4 V |
| CHARGER: | JC925A |
| BATTERY RECHARGE TIME: | 80% capacity - 60min 100% capacity - 80min |
| APPLICABLE REBAR COMBINATION: | Mesh rebars: φ10×φ10 |

TW898 SERIES SINGLE WIRE

Tiewire for RE-BAR-TIER™



50 coils / box



TW898
Regular Steel



TW898-EG
Electro Galvanize



TW898-PC
Polyester-Coated



TW898-S
Stainless Steel

*Not recommended for use with RB518

PRODUCTS

PJRC160 - CORDLESS REBAR CUTTER-



| SPECIFICATIONS | |
|------------------------|---|
| MODEL: | PJRC160 |
| WEIGHT: | 7.6 Kg Battery included |
| DIMENSIONS: | H228 × W100 × L389 |
| CUT SPEED: | 3.3 sec/cut |
| APPLICABLE REBAR: | UP TO 16MM REBAR |
| CUTS PER CHARGE: | 310 Cuts |
| BATTERY: | JPL92550A 5.0 Ah Li-ion 25.2 V |
| CHARGER: | JC925A |
| BATTERY RECHARGE TIME: | 80% capacity - 60min 100% capacity - 80min |

STANDARD EQUIPMENT FOR RE-BAR-TIER TVINTIER



JC925A
Charger



JPL91450A
14.4V 5.0Ah Li-ion Battery
X 2 PACKS

INFORMATION

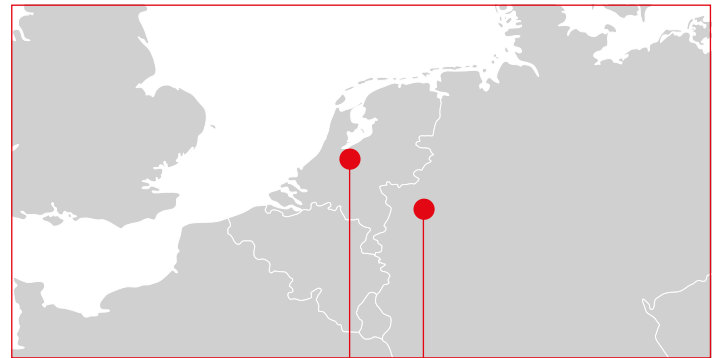


SERVICE AND FOLLOWUP

REPAIR SERVICE/LOCATIONS

MAX authorized repair centers are available across Europe. Our distributors, dealers, and the MAX team is dedicated in not only providing premium product, but also providing quality service as well. With over 80 years of manufacturing and development experience, MAX is able to provide quality service that meet the demands of the real-world environment.

Members of Max Group



BUSINESS LOCATION



MAX EUROPE B.V.

Antennestraat 45
1322 AH Almere
TEL: +31 (0)36 546 9669
www.max-europe.com



MAX EUROPE B.V.
GERMAN OFFICE

Bonner Straße 203d
40589 Düsseldorf
TEL: +49 (0)211 5989 6750
www.max-europe.com/de



maxeuropebv



max_europe



max-europe



max-europe

RE·BAR·TIER

TWINTIER

MAX

ENGINEERED FOR
PERFORMANCE



Dealer:

The specifications and design of the products in this catalogue will be subject to change without advance notice due to our continuous efforts to improve the quality of our products.

TT Ver.2_092024_PGN_EN