

Sisalex® 518

Vapour barrier / moisture barrier



- > Can be laid directly on cement-based building materials
- > High s_d value, more than 1500 m = absolutely airtight
- > PE backing makes the membrane alkali-resistant
- > Moisture-resistant, well-suited for e.g. swimming pools and sauna
- > Increased resistance to tears by nails

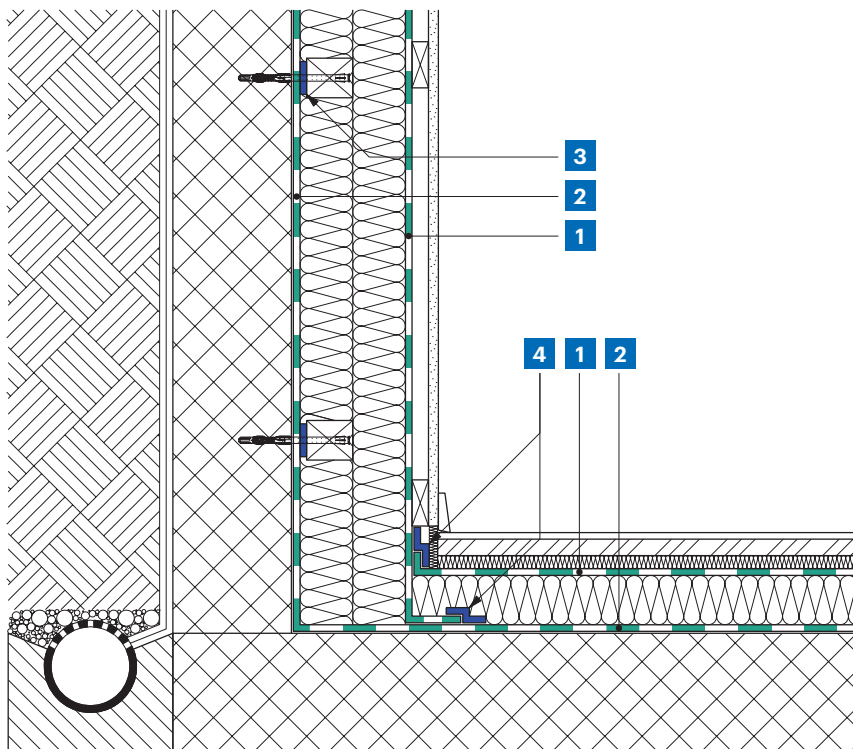
Technical details		Value	Standard
s _d value		> 1500 m	EN 1931
Weight		175 g / m ²	EN 1849-2
Tear resistance	longitudinal	180 N/5 cm	EN 12 311-2 / A
	transverse	160 N/5 cm	
Tear elongation	longitudinal	20%	EN 12 311-2 / A
	transverse	15%	
Resistance to further tearing (nail shaft)	longitudinal	180 N	EN 12 310-1
	transverse	180 N	
Fire behaviour		E	EN 13 501-1
Waterproofing (at 2 kPa)		passed	DIN EN 1928
Width of overlap		10 cm	
Straightness		< 75 mm/10 m	EN 1848-2
Temperature resistance		-40 to 80°C	
Water vapour resistance after ageing		passed	EN 1296

* Conditions for the twenty-year premium warranty include registering the building object and the Ampack products used. In addition, our products must be used as part of a system. For further details, please see our General Warranty Conditions.



Forms of delivery			
Article number	Description	Roll dimensions	Content of pallets
7640115536457	Sisalex® 518	1,5 m × 50 m = 75 m ²	40 rolls = 3000 m ²

Application "Cellar extension with interior insulation and facing shell"




- 1** **Sisalex® 514**
Vapour barrier
- 2** **Sisalex® 518**
Vapour barrier




Tips for laying

Apply the moisture barrier **Sisalex® 518** on the cold side of the thermal insulation with an overlap of 10 cm. Make sure that the printed side with aluminium faces you when applying the barrier. Fresh mortar, cement or other alkali-containing products have no effect on the product. Join the overlapping ends with **Ampacoll® BK 530 (20mm)** making sure that the strip is under the overlap and use **Ampacoll® Flexx** or **Ampacoll® XT** as additional protection. Used as vapour barrier, apply **Sisalex® 518** on the warm side. Make sure that the printed aluminium side faces you when applying the barrier. Use **Ampacoll® Flexx** or **Ampacoll® XT** to join the over-

lapping ends. In rooms that are subject to constant moisture we recommend double bonding with **Ampacoll® BK 530 (20mm)** and **Ampacoll® Flexx** or **Ampacoll® XT**. Edges must be joined with **Ampacoll® BK 530 (20mm)** and secured with an edge strip. Porous, dusty or rough surfaces must be applied with **Ampacoll® Primax** or **Ampacoll® Airmax**. The liquid adhesive **Ampacoll® RA** can also be used for edge connections. In cases of high humidity **Ampacoll® Profix** is recommended. Please note that one side of the material must be diffusive so that the adhesive can set. Only with this system will **Sisalex® 518** provide an absolute humidity barrier.

 Note the application guidelines and other system products in our adhesive matrix

 For more detailed information and documents see www.ampack.biz

Sales through dealers

Ampack Switzerland: +41 (0)71 858 38 00
Ampack Austria: +43 (0)5523 53433
Ampack Germany: +49 (0)7621 1610264
Ampack France: +33 (0)4 50 83 70 54
Ampack Italy: +39 (0)471 053 475

www.ampack.biz



This data may become invalid as a result of new information or development.
Current information can be found at www.ampack.biz © Ampack AG, Rorschach, 02.2021

4116EU/EX.YY(VS)0221